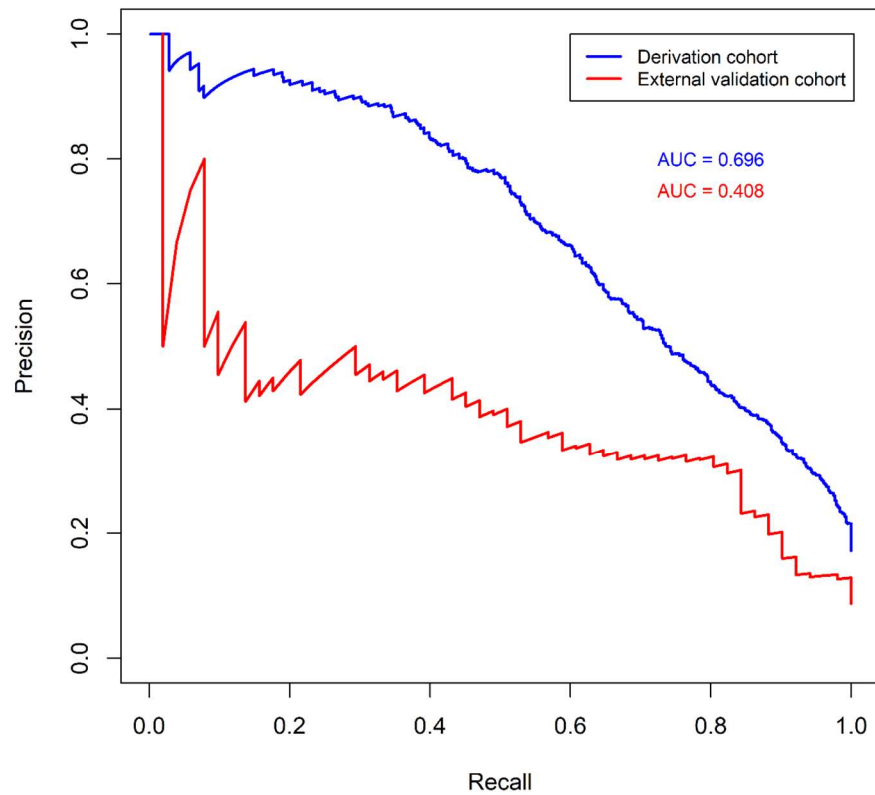
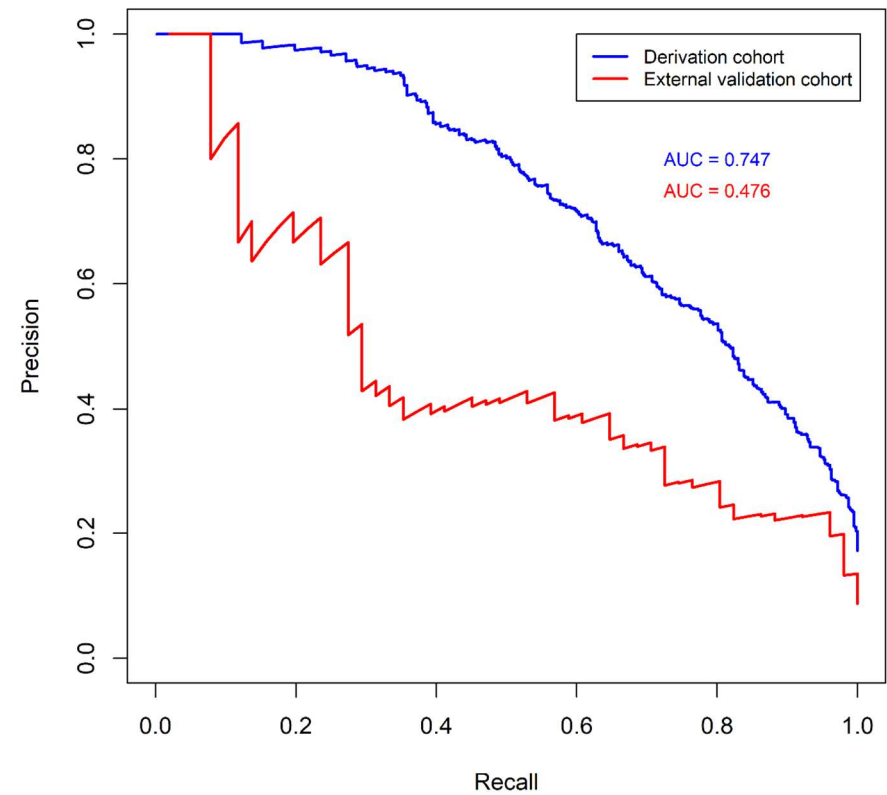


**Figure S2.** Precision-recall curves of the extreme gradient boosting models for cardiac surgery–associated acute kidney injury. (A) Precision-recall curve of the extreme gradient boosting model with only the preoperative variables. (B) Precision-recall curve of the extreme gradient boosting model with the preoperative and intraoperative variables. AUC, area under the curve.

A

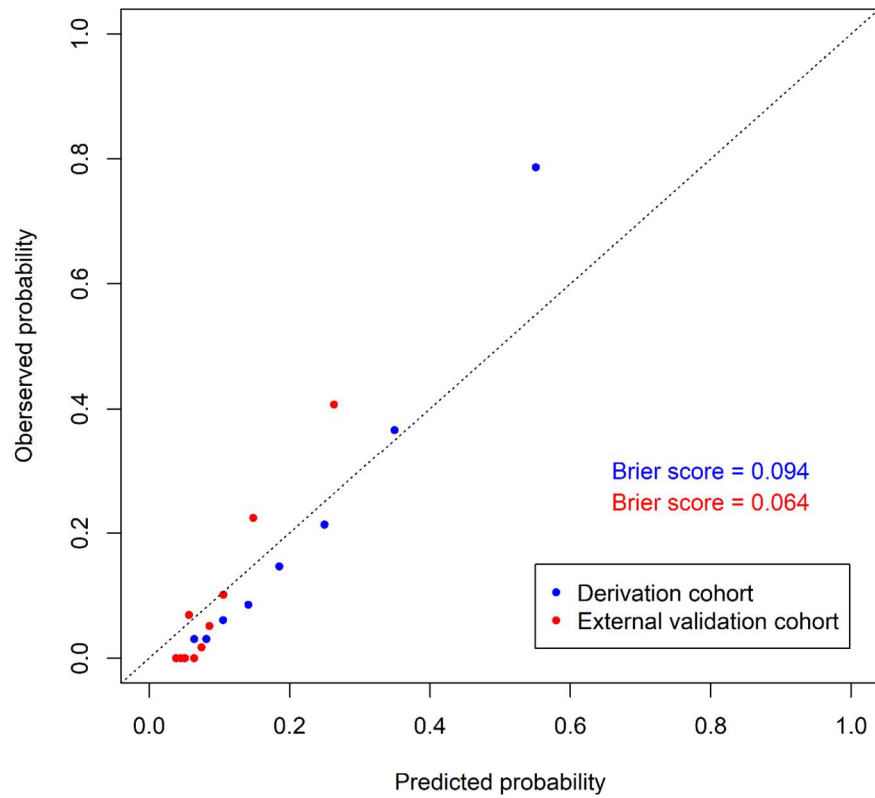


B



**Figure S3.** Calibration curves of the extreme gradient boosting models for cardiac surgery–associated acute kidney injury. (A) Calibration curve of the extreme gradient boosting model with only the preoperative variables. (B) Calibration curve of the extreme gradient boosting model with the preoperative and intraoperative variables.

A



B

